




Dental Cabinet Systems

TAILORED SOLUTIONS FOR
YOUR DENTAL PRACTICE



2024 
CATALOG

1-800-388-6236
mcc dental.com

ALLURE COLLECTION



STYLISH



STRONG



FUNCTIONAL

WHY CHOOSE MCC DENTAL

50+ YEARS EXPERTISE



CUSTOM AND PRE-DESIGN OPTIONS



INNOVATION



6-YEAR WARRANTY



TECHNOLOGY



MATERIALS AND HARDWARE



FAST LEAD TIMES



SAFETY



CUSTOMER SERVICE/SUPPORT



Since 1969, MCC Dental has been working closely with dental professionals to identify and deliver on their unique business requirements. Every practice is as unique as the professionals who run them, and we understand that a variety of solutions are needed to meet the needs of every dentist.

TAILORED SOLUTIONS FOR YOUR DENTAL PRACTICE

TABLE OF CONTENTS

CATEGORY	MODEL	PAGE
ALLURE Intro		4
ALLURE Rear Cabinets	CONFIGURATIONS, FEATURES & OPTIONS	5-9
ALLURE Rear Cabinets	MEASUREMENTS	10
ALLURE Side Cabinets	CONFIGURATIONS, FEATURES & OPTIONS	11-13
ALLURE Side Cabinets	MEASUREMENTS	14
ALLURE Center Island	CONFIGURATIONS, FEATURES & OPTIONS	15-17
ALLURE Center Island	MEASUREMENTS	18
ALLURE T-wall cabinets	CONFIGURATIONS, FEATURES, OPTIONS & MEASUREMENTS	18-19
ALLURE Pediatric Bench	CONFIGURATIONS, FEATURES, OPTIONS & MEASUREMENTS	20
ALLURE Sterilization Centers		21-27
ALLURE 10' Sterilization Center	CONFIGURATIONS, FEATURES & OPTIONS	22
ALLURE 12' Sterilization Center	CONFIGURATIONS, FEATURES & OPTIONS	23
ALLURE 14' Sterilization Center	CONFIGURATIONS, FEATURES & OPTIONS	24
ALLURE Sterilization Centers & Towers option	MEASUREMENTS	25-26
ALLURE Sterilization Centers w/Ultrasonic Drop Down option	MEASUREMENTS	27
ALLURE Colors Selection	LAMINATE AND SOLID SURFACE COLORS	28
MCC Company info		29
ALLURE Terms and Conditions/Warranty		30-31

ALLURE COLLECTION



All pricing in USD.

ALLURE CABINET COLLECTION

Affordable Quality, Stylish Simplicity: Elevate Your Practice with Our Competitively priced ALLURE Cabinet Essentials!

ALLURE Cabinet Features

Casework (internal):

- ✓ Independent levelling legs
- ✓ Mounting hardware provided for wood and concrete floor anchoring
- ✓ Industrial grade particleboard (45-50+ lb./ 20-22 kg density)
- ✓ 1 mm white edge band
- ✓ White melamine covering
- ✓ 100% Recycled board

Outerheads (external):

- ✓ Industrial grade particleboard (45+ lb./20+ kg)
- ✓ 2 mm color-and pattern-matched edge banding
- ✓ High-pressure decorative laminate
- ✓ Lead free, non-toxic, eco-friendly radiation shielding
- ✓ Soft-close drawers
- ✓ Soft-close hinges
- ✓ Adjustable 1/4" Solid Surface shelves
- ✓ Steri towers with 3/4" Solid Surface pull-out shelves
- ✓ Fastened in place (removable) countertops
- ✓ Custom MCC medical grade electrical outlets
- ✓ Subbase in stainless steel laminate with marine grade plywood substrate with leveling legs

WE HAVE YOU COVERED



At MCC Dental we stand behind our products with a Six (6) Year casework warranty. We want every MCC Dental customer to be satisfied and covered for a long time because, with more than 50 years in the business, we believe that our cabinets are built to last, with a craftsmanship and passion that distinguish us from our competitors. Whether it's modular, custom construction, sterilization or mobile cabinetry, our philosophy is always to design and deliver the absolute best and durable cabinets for your dental office.

ALLURE Rear Cabinets



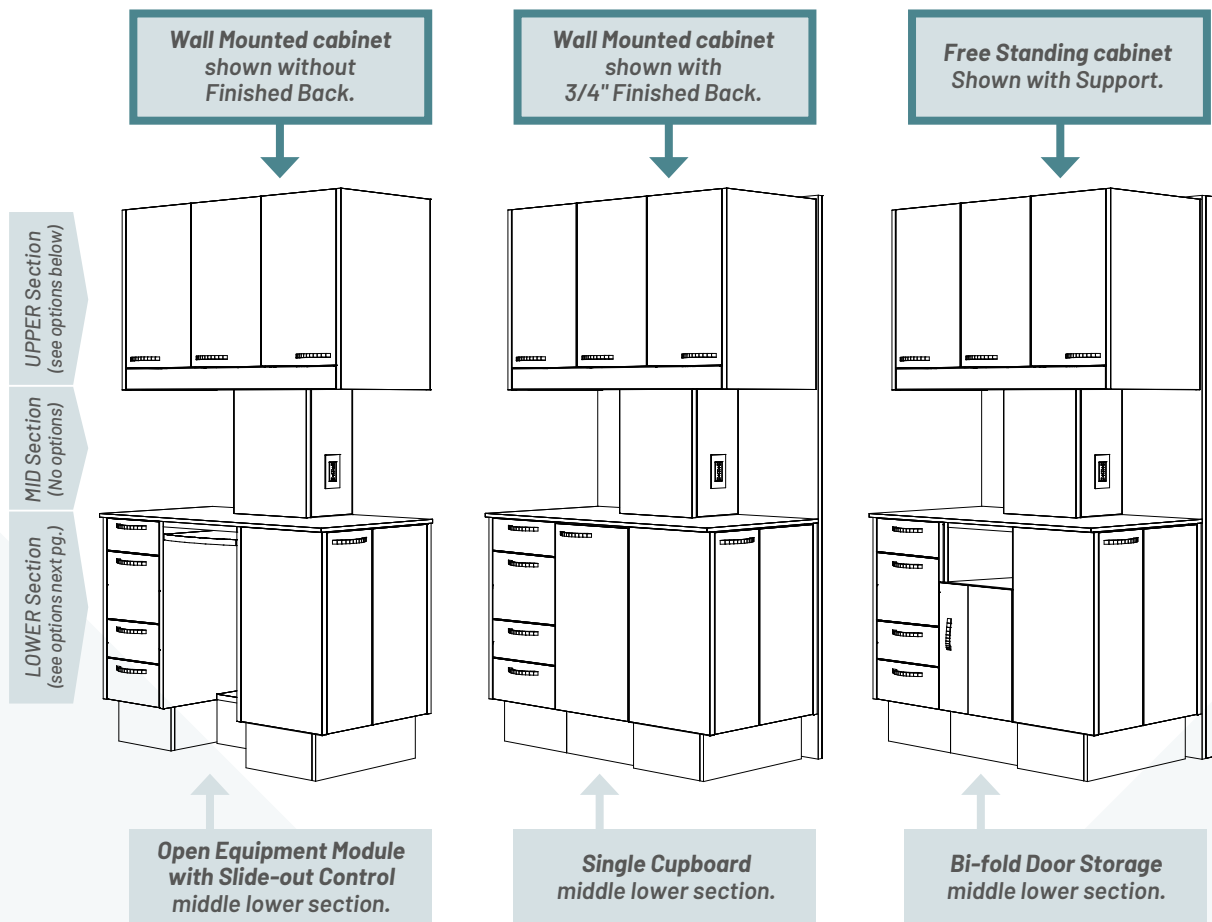
*Shown with
Open Equipment Module
with Slideout Control
and Finished Back*

General Features

- Solid surface countertop
- Midsection brushed aluminum accent panel
- PVC edging
- 5" brushed metal handles
- Upper cabinets can be integrated into cabinet construction or wall mounted
- Midsection with 2 medical grade electrical outlets
- Ability to accommodate both left and right handed dentists
- Soft-close drawers
- 155° soft-close hinges
- Subbase in stainless steel laminate with marine grade plywood substrate with leveling legs
- 6-year Warranty

ALLURE COLLECTION

42" Rear Cabinet



STEP 1 - SELECT YOUR 42" CABINET		Part Number	Retail	✓
ALLURE 42" Rear Cabinet - Wall Mounted		ARWM42	\$ 4,873.00	
ALLURE 42" Rear Cabinet with 74" x 42" Wide Support for Free Standing Cabinet		ARFS42	\$ 6,712.00	
ALLURE 42" Rear Cabinet Lower Only		ARL42	\$ 3,628.00	
ALLURE 42" Rear Cabinet Upper Only		ARU42	\$ 2,153.00	
Add 3/4", 74" Tall, 42" Wide Finished Back Panel		ARFBP42	N.C.	
Add 3/4", 31-1/2" Tall, 42" Wide Finished Back Panel for Lower Section Only		ARLFBP42	N.C.	

STEP 2 - SELECT YOUR 42" UPPER		Part Number	Retail	✓
42" Upper with 5 Solid Surface Shelves (Left or Right)		AU426	INCLUDED	
42" Upper with Pass Through Doors		AU42PT	N.C.	
42" Upper with CPU in center/2 vents		AU42CPU	N.C.	

All pricing in USD.

ALLURE COLLECTION

42" Rear Cabinet

STEP 3 - SELECT YOUR 42" LOWER		Part Number	Retail	✓
CHOOSE YOUR LEFT LOWER				
Front facing 1 Drawer with Cupboard	ARLDC42	N.C.		
Front facing 4 Drawers	ARLF4D42	N.C.		
Front facing 4 Drawer with Equipment Flip Down Door	ARL4DE42	N.C.		
Side facing 4 Drawers	ARL4D42	N.C.		
Side facing 2 Drawers with Slide-out Tray	ARLS042	N.C.		
CHOOSE YOUR MIDDLE LOWER				
Open Equipment Module with Slide-out Control	ARML0EM42	N.C.		
Single Cupboard	ARMLSC42	N.C.		
Bi-fold Door Storage	ARMLBFD42	N.C.		
CHOOSE YOUR RIGHT LOWER				
Single Cupboard	ARDRSC42	N.C.		
Front facing 1 Drawer with Cupboard	ARRDC42	N.C.		
Front facing 4 Drawers	ARRF4D42	N.C.		
Front facing 4 Drawer with Equipment Flip Down Door	ARR4DE42	N.C.		
Side facing 4 Drawers	ARR4D42	N.C.		
Side facing 2 Drawers with Slide-out Tray	ARRS042	N.C.		

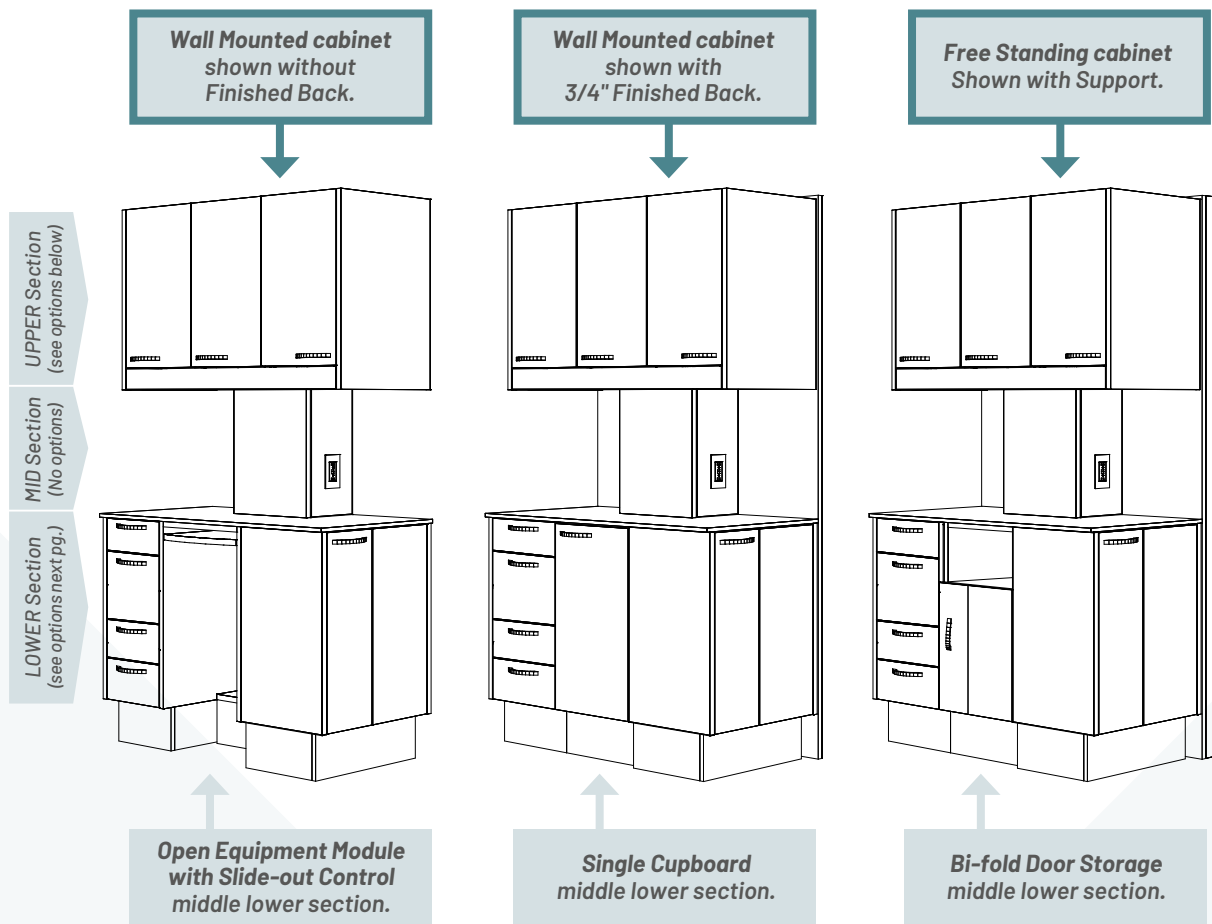
STEP 4 - SELECT YOUR COLORS	Retail
Cabinet Laminate color	INCLUDED
Solid Surface countertops	INCLUDED
See color selection at page 28	

MIDDLE LOWER CONTROL OPTIONS	Part Number	Retail	✓
Under Surface 3-HP Automatic Control with Vacuum Package and Clean Water, 2-HVE, 1-SE and Air/Water Regulators (for ARML0EM42)	MC3150	\$ 4,719.00	
Under Surface Vacuum Package with Clean Water, 2-HVE, 1-SE and air regulator (for ARML0EM42)	MC5150	\$ 2,595.00	
Arm Assembly with Floating Work Surface and Mounting Plate (for ARMLBFD42), Control Not Included	MDLAASS	\$ 2,445.00	
MC3150 Control with Arm Assembly, Floating Work Surface and Mounting Plate (for ARMLBFD42)	MC3150FL	\$ 7,164.00	
MC5150 Vacuum Package with Arm Assembly, Floating Work Surface and Mounting Plate (for ARMLBFD42)	MC5150FL	\$ 5,040.00	

All pricing in USD.

ALLURE COLLECTION

36" Rear Cabinet



STEP 1 - SELECT YOUR 36" CABINET		Part Number	Retail	✓
ALLURE 36" Rear Cabinet - Wall Mounted		ARWM36	\$ 4,527.00	
ALLURE 36" Rear Cabinet with 74" x 36" Wide Support for Free Standing Cabinet		ARFS36	\$ 6,354.00	
ALLURE 36" Rear Cabinet Lower Only		ARL36	\$ 3,619.00	
ALLURE 36" Rear Cabinet Upper Only		ARU36	\$ 2,153.00	
Add 3/4", 74" Tall, 36" Wide Finished Back Panel		ARFBP36	N.C.	
Add 3/4", 31-1/2" Tall, 36" Wide Finished Back Panel for Lower Section Only		ARLFBP36	N.C.	

STEP 2 - SELECT YOUR 36" UPPER		Part Number	Retail	✓
36" Upper with 5 Solid Surface Shelves (Left or Right)		AU366	INCLUDED	
36" Upper with Pass Through Doors		AU36PT	N.C.	
36" Upper with CPU in center/2 vents		AU36CPU	N.C.	

All pricing in USD.

ALLURE COLLECTION

36" Rear Cabinet

STEP 3 - SELECT YOUR 36" LOWER		Part Number	Retail	✓
CHOOSE YOUR LEFT LOWER				
Front facing 1 Drawer with Cupboard	ARLDC36		N.C.	
Front facing 4 Drawers	ARLF4D36		N.C.	
Front facing 4 Drawer with Equipment Flip Down Door	ARL4DE36		N.C.	
Side facing 4 Drawers	ARL4D36		N.C.	
Side facing 2 Drawers with Slide-out Tray	ARLS036		N.C.	
CHOOSE YOUR MIDDLE LOWER				
Open Equipment Module with Slide-out Control	ARML0EM36		N.C.	
Single Cupboard	ARMLSC36		N.C.	
Bi-fold Door Storage	ARMLBFD36		N.C.	
CHOOSE YOUR RIGHT LOWER				
Single Cupboard	ARDRSC36		N.C.	
Front 1 Drawer with Cupboard	ARRDC36		N.C.	
Front facing 4 Drawers	ARRF4D36		N.C.	
Front facing 4 Drawer with Equipment Flip Down Door	ARR4DE36		N.C.	
Side facing 4 Drawers	ARR4D36		N.C.	
Side facing 2 Drawers with Slide-out Tray	ARRS036		N.C.	

STEP 4 - SELECT YOUR COLORS	Retail
Cabinet Laminate color	INCLUDED
Solid Surface countertops	INCLUDED
See color selection at page 28	

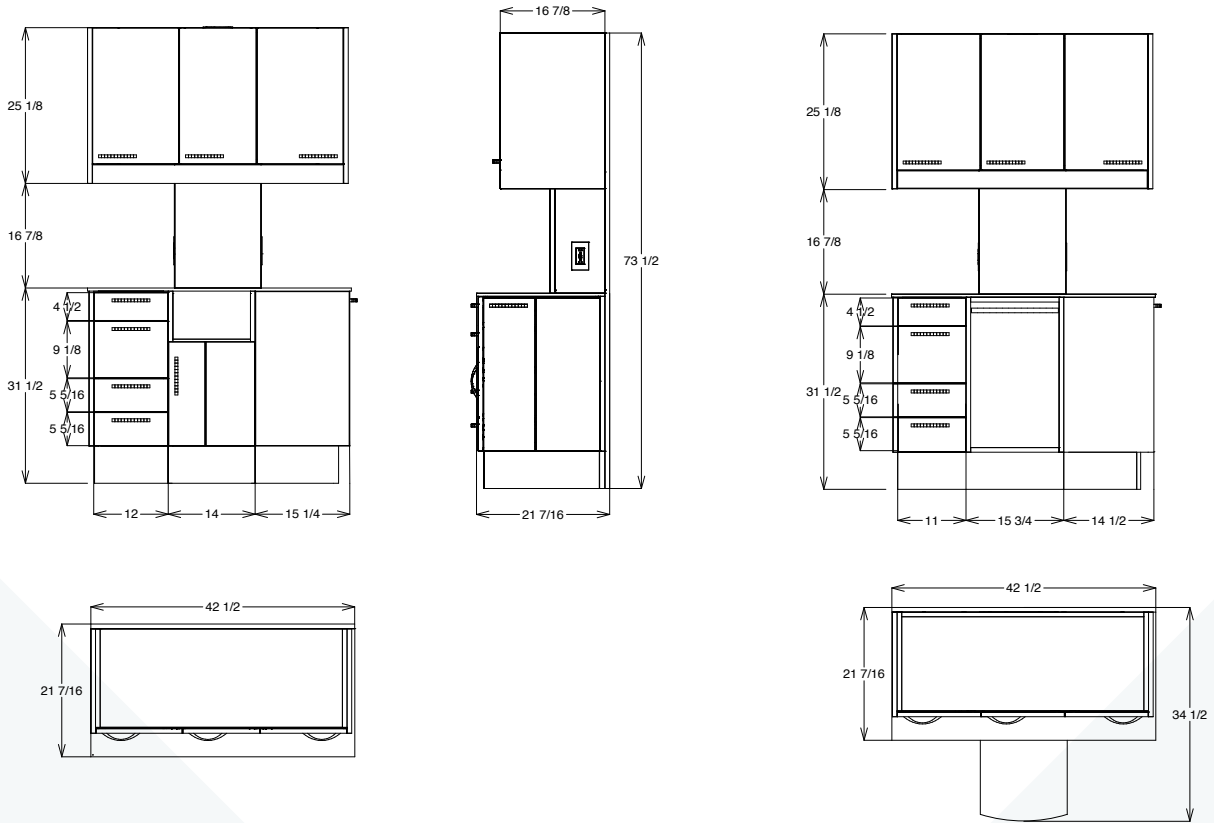
MIDDLE LOWER CONTROL OPTIONS	Part Number	Retail	✓
Under Surface 3-HP Automatic Control with Vacuum Package and Clean Water, 2-HVE, 1-SE and Air/Water Regulators (for ARML0EM36)	MC3150	\$ 4,719.00	
Under Surface Vacuum Package with Clean Water, 2-HVE, 1-SE and air regulator (for ARML0EM36)	MC5150	\$ 2,595.00	
Arm Assembly with Floating Work Surface and Mounting Plate (for ARMLBFD36), Control Not Included	MDLAASS	\$ 2,445.00	
MC3150 Control with Arm Assembly, Floating Work Surface and Mounting Plate (for ARMLBFD36)	MC3150FL	\$ 7,164.00	
MC5150 Vacuum Package with Arm Assembly, Floating Work Surface and Mounting Plate (for ARMLBFD36)	MC5150FL	\$ 5,040.00	

All pricing in USD.

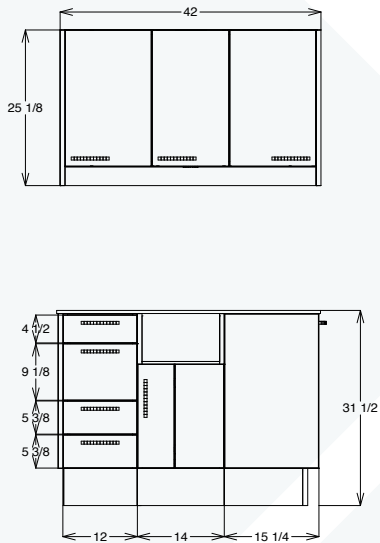
ALLURE COLLECTION

Rear Cabinets Measurements

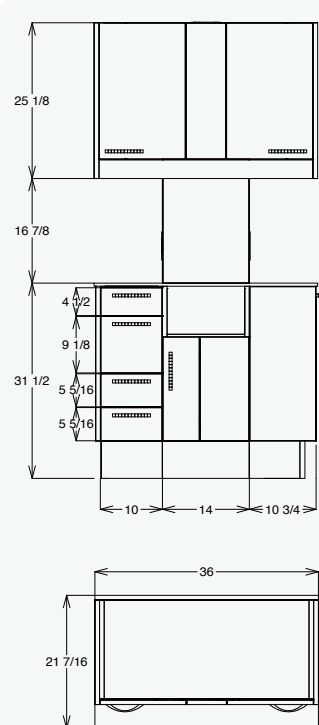
42" Rear Cabinets



42" Rear Cabinets with wall hung Up



36" Rear Cabinets Measurements



All measurement drawings are shown with Wall Mounted cabinets.

ALLURE Side Cabinets

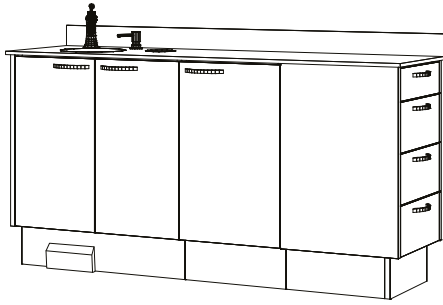


General Features

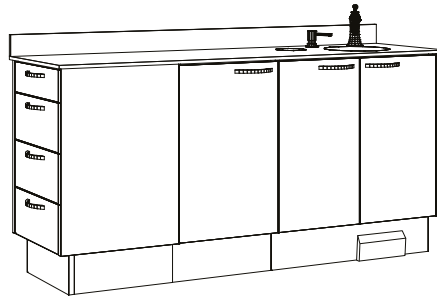
- Solid surface countertop
- PVC edging
- 5" brushed metal handles
- Integrated countertop waste drop
- Under mounted stainless steel sink included with solid surface counter only
- Hardware and plumbing fixtures included
- Soft-close drawers
- 155° soft-close hinges
- Subbase in stainless steel laminate with marine grade plywood substrate with leveling legs
- 6-year Warranty

ALLURE COLLECTION
Side Cabinets

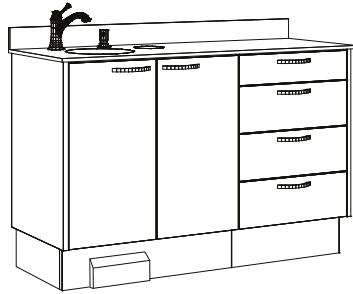
AS63SDL



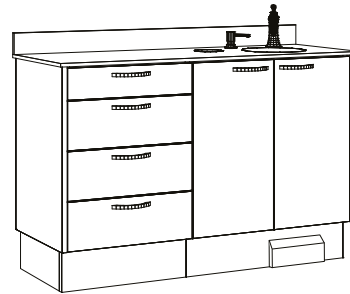
AS63SDR



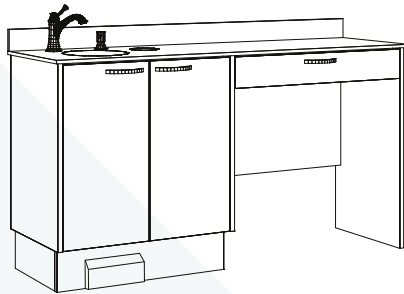
AS51L



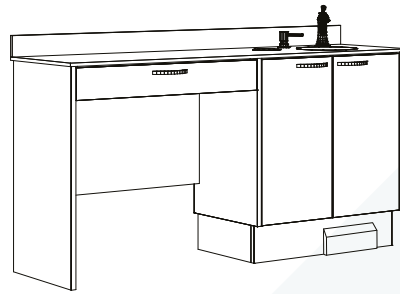
AS51R



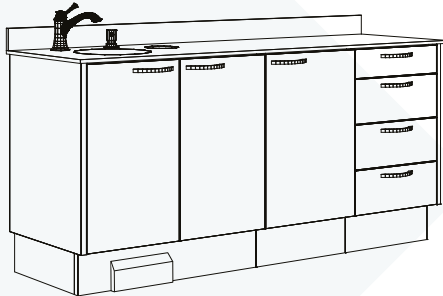
ASPDL



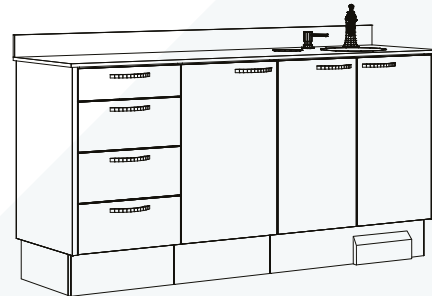
ASPDR



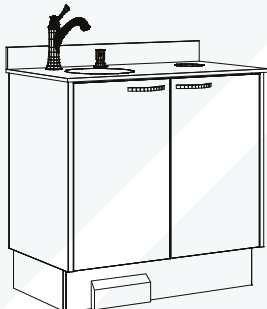
AS63FDL



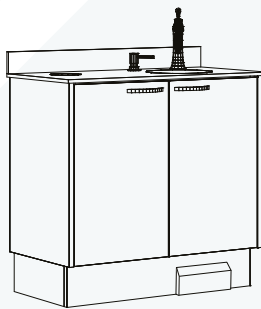
AS63FDR



AS33L



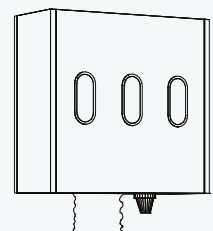
AS33R



AS22



AGTC



ALLURE COLLECTION Side Cabinets

STEP 1 - SELECT YOUR SIDE CABINET	Part Number		Retail	✓
63" Side Cabinet, with Side Facing 4 Drawer, Front Doors, 28" Sink, 33" tall	Sink Left	AS63SDL	\$ 4,172.00	
	Sink Right	AS63SDR		
51" Side Cabinet, Front Side Drawer, Doors, 28" Sink, 33" tall	Sink Left	AS51L	\$ 3,655.00	
	Sink Right	AS51R		
63" Side Delivery Cabinet, 32" Pencil Drawer, Doors, 28" Sink, 33" tall	Sink Left	ASPDL	\$ 3,035.00	
	Sink Right	ASPDR		
63" Side Cabinet, Front Side Drawer, Doors, 28" Sink, 33" tall	Sink Left	AS63FDL	\$ 4,172.00	
	Sink Right	AS63FDR		
33" Sink Cabinet, Front Door, 33" tall	Sink Left	AS33L	\$ 2,114.00	
	Sink Right	AS33R		
22" Sink Cabinet, 33" tall	Sink Center	AS22	\$ 1,916.00	
Glove/Paper Towel/Cup Dispenser	N/A	AGTC	\$ 780.00	

STEP 2 - SELECT YOUR COLORS	Retail
Cabinet Laminate color	INCLUDED
Solid Surface countertops	INCLUDED
See color selection at page 28	

STANDARDS	Part Number	Retail	✓
Stainless Steel Sink	MP1R	N.C.	
Chrome Faucet & Soap Dispenser	MP3MP2K	N.C.	
Counter Waste With Pail	CWWP01	N.C.	
Tapmaster Hands Free Water Activation System	AMP1750	\$ 700.00	
Waste Drop Receptacle, Bin and P-trap Extension (bags not included)	MPTN	N.C.	

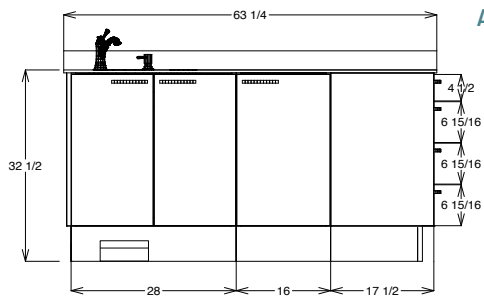
OPTIONS	Part Number	Retail	✓
Upper Storage Cabinet H28" W16" Single Door	AUS16	\$ 570.00	
Upper Storage Cabinet H28" W24" Double Door	AUS24	\$ 699.00	
Upper Storage Cabinet H28" W36" Double Door	AUS36	\$ 844.00	

All pricing in USD.

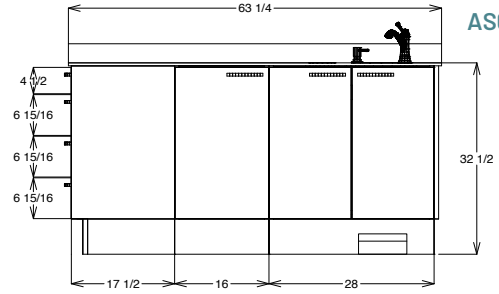


ALLURE COLLECTION

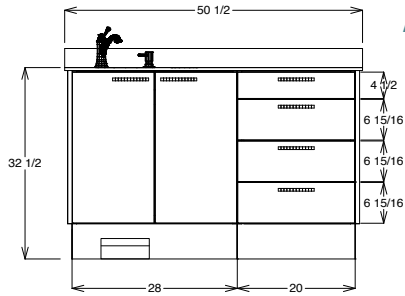
Side Cabinets Measurements



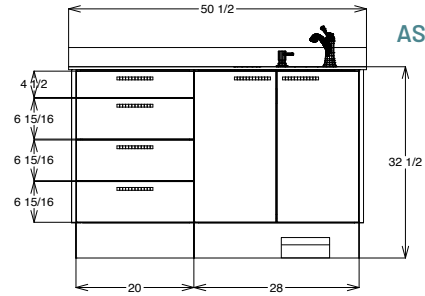
AS63SDL



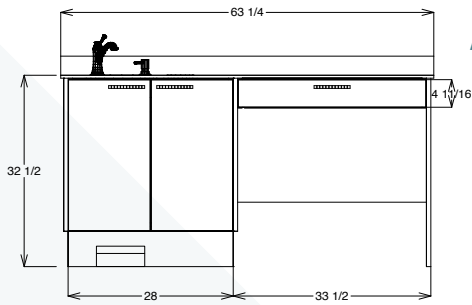
AS63SDR



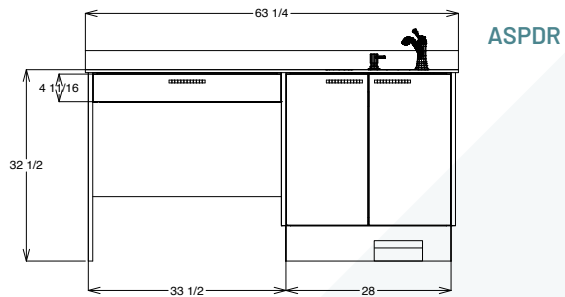
AS51L



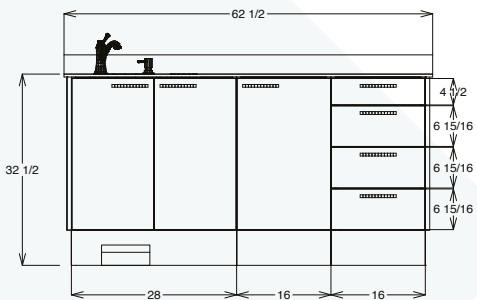
AS51R



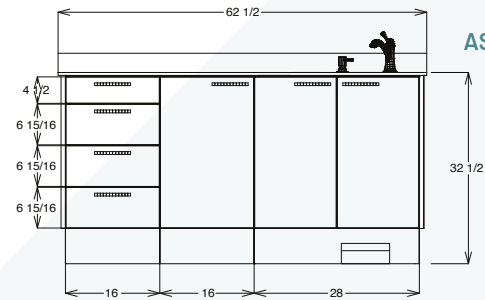
ASPDL



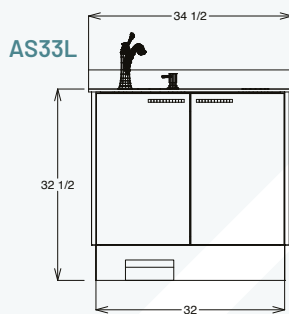
ASPDR



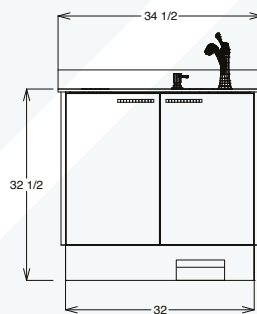
AS63FDL



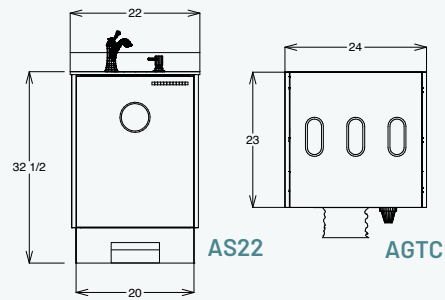
AS63FDR



AS33L

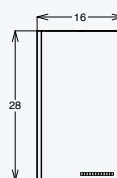


AS33R

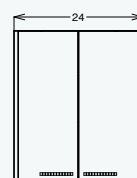


AS22

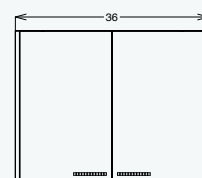
AGTC



AUS16



AUS24



AUS36

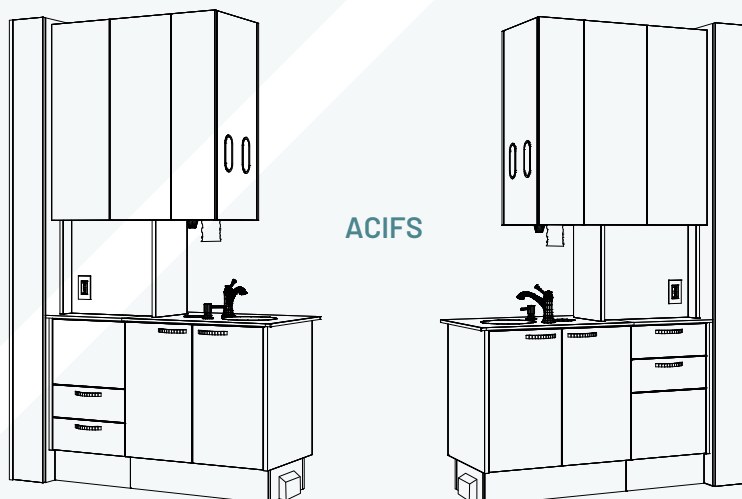
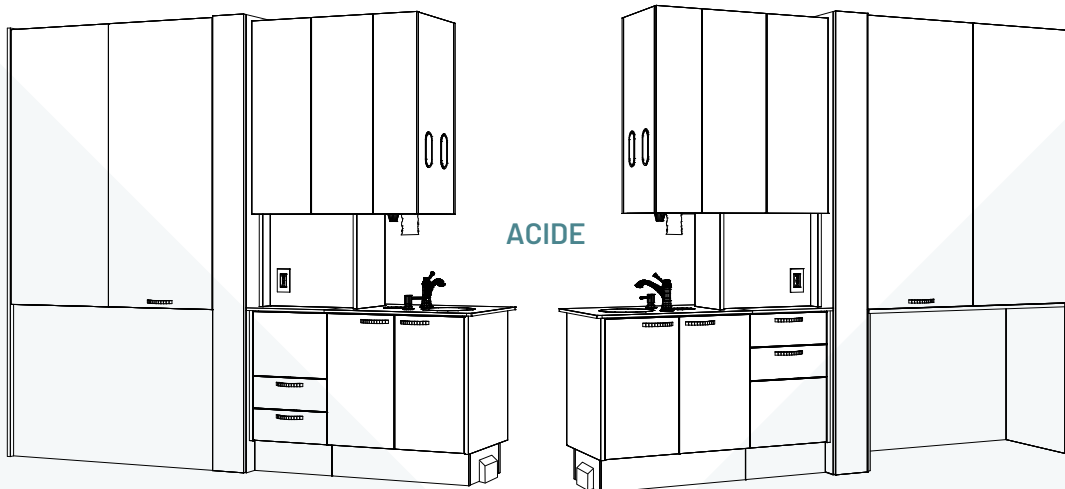
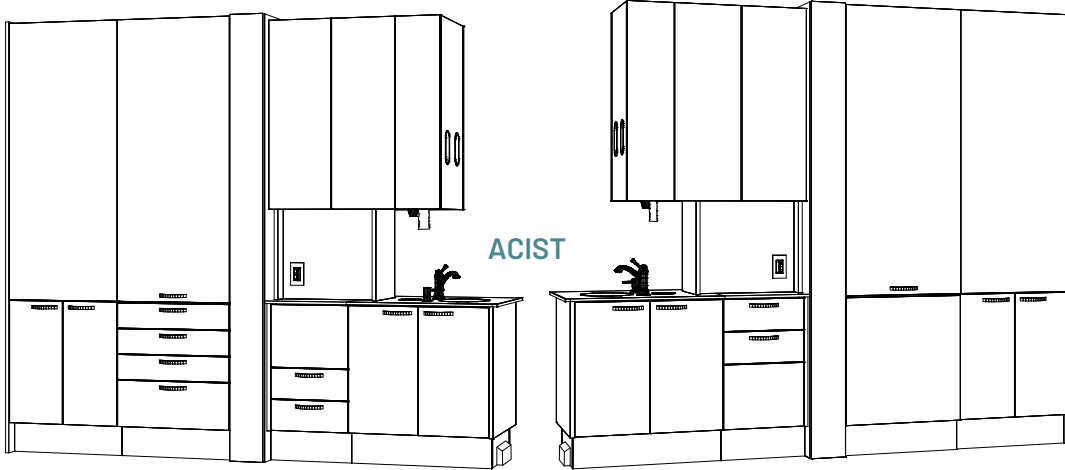
ALLURE Center Islands



General Features

- Solid surface countertop
- PVC edging
- 5" brushed metal handles
- 3 configuration options
- Under mounted stainless steel sink with Solid Surface only
- Hardware and plumbing fixtures included
- Tapmaster Hands Free Water Activation System
- 2 medical grade electrical outlets
- Soft-close drawers
- 155° soft-close hinges
- Subbase in stainless steel laminate with marine grade plywood substrate with leveling legs
- 6-year Warranty

ALLURE COLLECTION
Center Island Cabinets



ALLURE COLLECTION

Center Island Cabinets

STEP 1 - SELECT YOUR CENTER ISLAND CABINET	Part Number	Retail	✓
Center Island 48" Bi-Fold Doors, Pass Through X-Ray Storage, Storage Lower	ACIST	\$ 13,705.00	
Center Island 48" Bi-Fold Doors, Pass Through X-Ray Storage, Delivery Lower	ACIDE	\$ 13,395.00	
Center Island Front Section Only	ACIFS	\$ 9,005.00	

STEP 2 - SELECT YOUR LOWER MODULE	Part Number	Retail	✓
Center Island for Left Delivery	AIDL	N.C.	
Center Island for Right Delivery	AIDR	N.C.	

STEP 3 - SELECT YOUR COLORS	Retail
Cabinet Laminate color	INCLUDED
Solid Surface countertops	INCLUDED
See color selection at page 28	

STANDARDS	Part Number	Retail	✓
Glove, Cup and Paper Towel Dispenser	12BGD	N.C.	
Under Counter Mounted Stainless Steel Sink	MP1R	N.C.	
Chrome Faucet and Soap Dispenser	MP3MP2K	N.C.	
Counter Waste With Pail	CWWP01	N.C.	
Tapmaster Hands Free Water Activation System	AMP1750	N.C.	

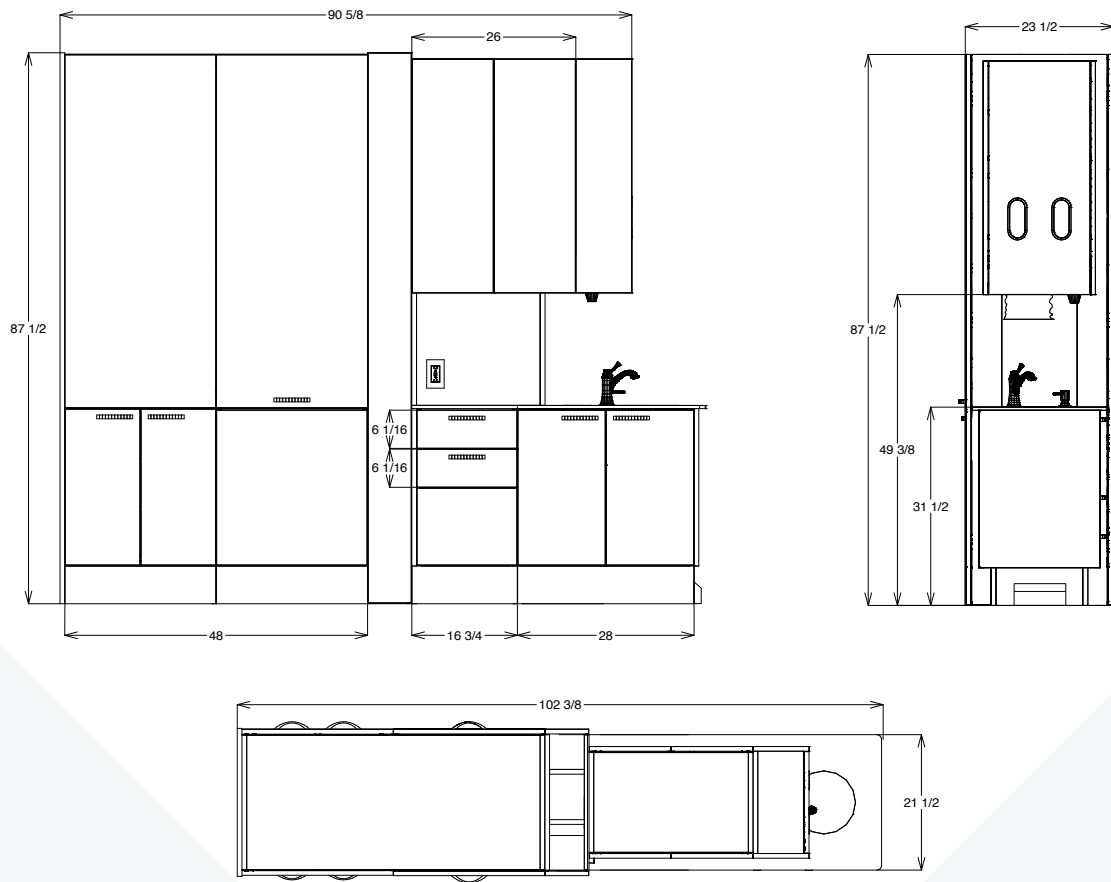
OPTIONS	Part Number	Retail	✓
48" Bi-Fold Doors, Pass Through X-Ray Storage, Lead Lined	MSCI48PTSLL	\$ 2,125.00	
48" Lead Lining Option for Complete Center Island	MSCICLL	\$ 4,747.00	

All pricing in USD.



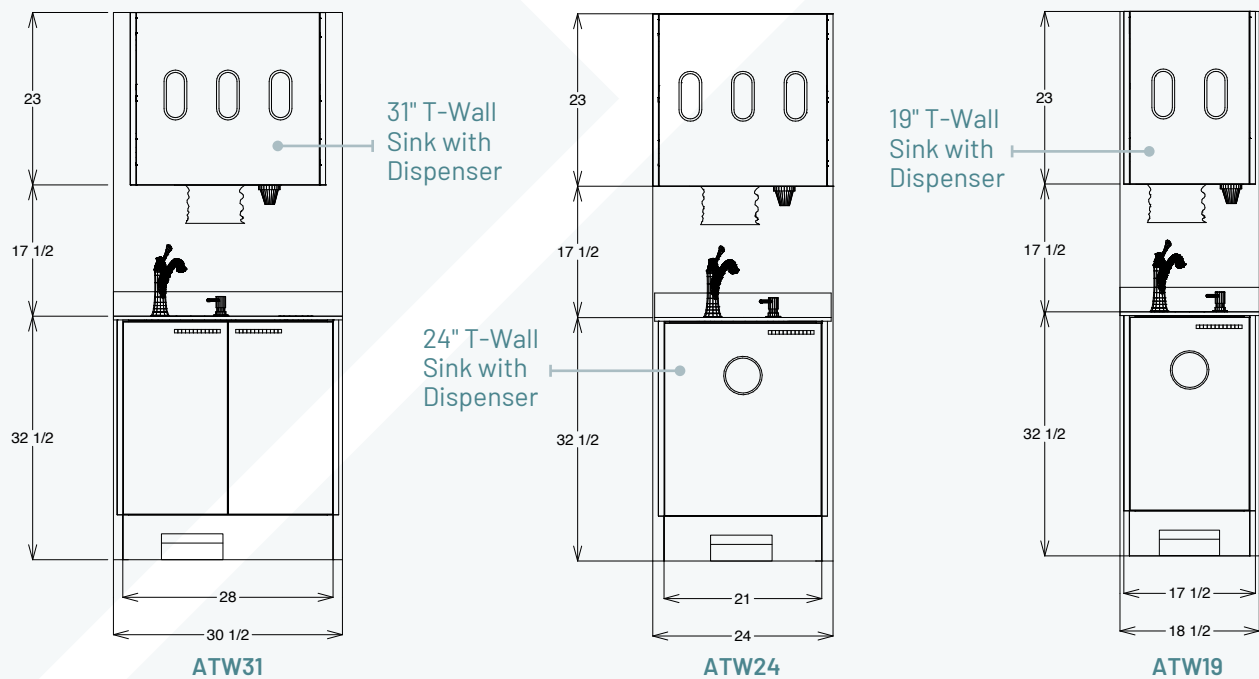
ALLURE COLLECTION

Center Island Measurements

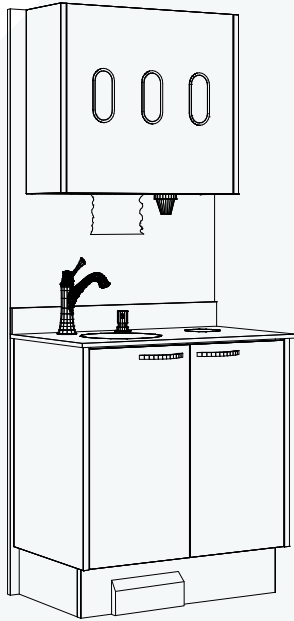


ALLURE COLLECTION

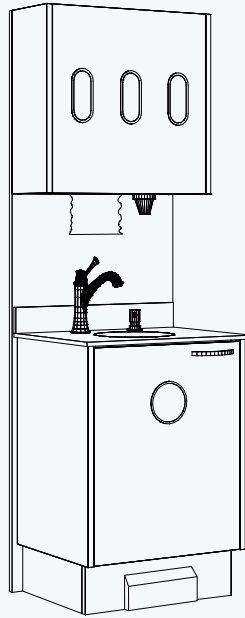
T-wall Measurements



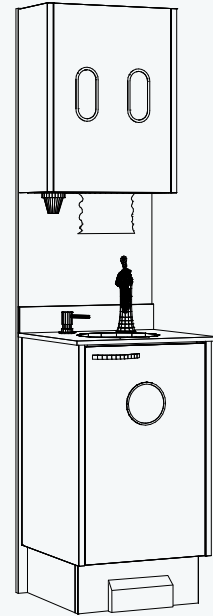
ALLURE COLLECTION T-Wall Cabinets



ATW31



ATW24



ATW19

STEP 1 - SELECT YOUR SIDE CABINET		Part Number	Retail	✓
31" T-Wall Sink with dispenser	Waste Drop Left	ATW31L	\$ 3,213.00	
	Waste Drop Right	ATW31R		
24" T-Wall Sink with dispenser		ATW24	\$ 2,960.00	
19" T-Wall Sink with dispenser		ATW19	\$ 2,770.00	

STEP 2 - SELECT YOUR T-WALL CABINET		Part Number	Retail	✓
Under Counter Mounted Stainless Steel Sink		MP1R	N.C.	
Chrome Faucet & Soap Dispenser		MP3MP2K	N.C.	
Tapmaster Hands Free Water Activation System		AMP1750	\$ 700.00	

STEP 3 - SELECT YOUR COLORS		Retail
Cabinet Laminate color		INCLUDED
Solid Surface countertops		INCLUDED
See color selection at page 28		

All pricing in USD.

ALLURE COLLECTION

Pediatric Bench

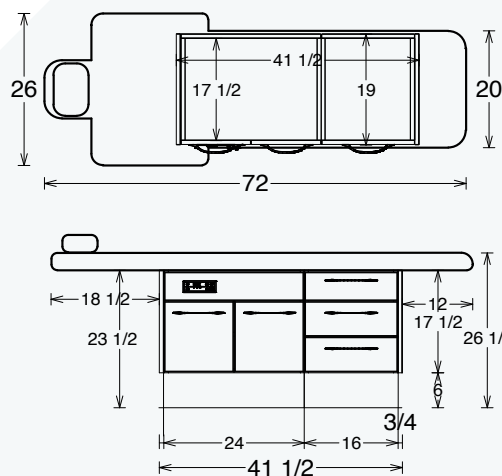
General Features

- Designed specifically for the Pediatric Dental Practice
- Optional Doctor/Assistant Controls
- Multiple laminate colors selection.
- Soft-close doors and drawers
- 5" brushed metal handles
- Subbase in stainless steel laminate with marine grade plywood substrate with leveling legs
- 6-year Warranty

STEP 1 - SELECT YOUR PEDIATRIC BENCH	Part Number	Retail	✓
Pediatric Bench with upholstery (black only)	APEDOBSM	\$ 3,099.00	

STEP 2 - SELECT YOUR CONTROL/VACUUM	Part Number	Retail	✓
2-HP Automatic Control with AW Syringe, Dual Folding Arms, Vacuum (1-HVE, 1-SE) and AW Syringe, Wall Mount Clean Water, air only regulator	MC2200P	\$ 4,013.00	
Fiber-Optic System for One Hand piece	MC1HPFO	\$ 1,305.00	
6 Pin Fiber-Optic System for One Hand piece	MC1HPFO-6	\$ 1,305.00	
Assistant's only package with AW Syringe (1-HVE, 1-SE) with Folding Arms and Vacuum Utilities	MCPDVK2U	\$ 1,718.00	
Clean Water	MCSCWM1	\$ 407.00	
Additional Universal Autoclavable HVE position with tubing	MC1HVE	\$ 133.00	
Routing Valve Kit with Water Shutoff & Regulator	MCRVK1	\$ 387.00	

All pricing in USD.



ALLURE Sterilization Centers

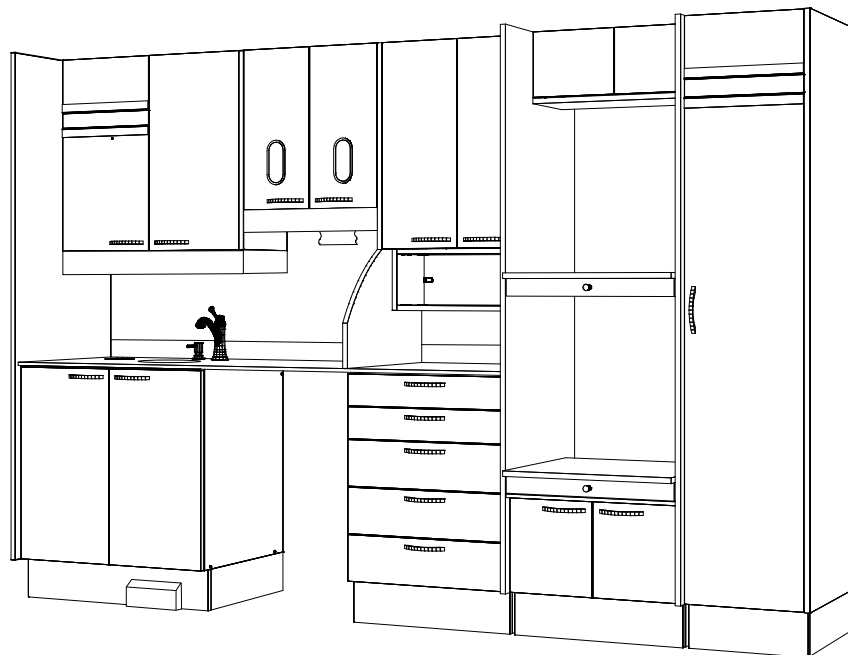


General Features

- Solid surface countertop
- Red (dirty) and Blue (clean) indicators
- 4 separate areas for receiving, preparation, sterilization and clean
- 5" brushed metal handles
- PVC edging
- Soft-close doors and drawers
- 4 HDPE towers option to choose from (pg 26)
- Towers' solid surface pullout autoclave shelves holds up to 200 lbs.
- Subbase in stainless steel laminate with marine grade plywood substrate with leveling legs
- 6-year Warranty

ALLURE COLLECTION

AST10



ALLURE 10' STERILIZATION CENTER	Part Number	Retail	✓
With OPTIONAL Ultrasonic Drop Down One Door Storage Cabinet (see pg. 27)	ASTDD10	N.C.	
Sink, Waste Module with Pullout Dual Bin 36"W x 32"H	-	INCLUDED	
Receiving & Cleaning Upper 2 Doors Module 32"W x 30"H with Red Indicator	-	INCLUDED	
Upper 2 Doors Module w/Glove & Towel 22-1/2"W x 24"H	-	INCLUDED	
Wrapping Station Module with 2 Doors 5 Drawers 24"W	-	INCLUDED	
Sterilization Tower 25"W (ATWR1 - Please see below for more choices)	ATWR1	INCLUDED	
Sterile Storage Module 1 Door with Blue Indicator 16"W	-	INCLUDED	
Tapmaster Hands Free Water Activation System	AMP1750	Add \$ 700.00	
	AST10	\$ 19,795.00	

SELECT YOUR STERI TOWER <i>(see bottom pg26)</i>	Part Number	Retail	✓
Tower 1 - Holds 2 Small Washer Units. Solid surface pull-outs.	ATWR1	INCLUDED	
Tower 2 - Holds 2 Sterilizers 1 Statim. Solid surface pull-outs.	ATWR2	N.C.	
Tower 3 - Holds 2 Sterilizers 1 Statim. Solid surface pull-outs.	ATWR3	N.C.	
Tower 4 - Holds 2 Sterilizers. Solid surface pull-outs.	ATWR4	N.C.	

SELECT YOUR COLORS	Retail
Cabinet Laminate color	INCLUDED
Solid Surface countertops	INCLUDED
See color selection at page 28	

All pricing in USD.

ALLURE COLLECTION

AST12



ALLURE 12' STERILIZATION CENTER	Part Number	Retail	✓
With OPTIONAL Ultrasonic Drop Down 2 Doors Storage Cabinet (see pg. 27)	ASTDD12	N.C.	
Waste Module with Pullout Dual Bin 18"W x 36"H	-	INCLUDED	
Sink Module 30"W x 36"H	-	INCLUDED	
Receiving & Cleaning Upper Door Module with Red Indicator 16"W x 30"H	-	INCLUDED	
Upper 2 Doors Module w/Glove & Towel 22-1/2"W x 24"H	-	INCLUDED	
Receiving & Cleaning Upper 2 Doors Module 23"W x 30"H	-	INCLUDED	
Wrapping Station Module with 2 Doors 5 Drawers Storage 24"W	-	INCLUDED	
Sterilization Tower 25"W (ATWR1 - Please see below for more choices)	ATWR1	INCLUDED	
Sterile Storage Module 1 Door with Blue Indicator 16"W	-	INCLUDED	
Tapmaster Hands Free Water Activation System	AMP1750	Add \$ 700.00	
	AST12	\$ 21,224.00	

SELECT YOUR STERI TOWER <i>(see bottom pg26)</i>	Part Number	Retail	✓
Tower 1 - Holds 2 Small Washer Units. Solid surface pull-outs.	ATWR1	INCLUDED	
Tower 2 - Holds 2 Sterilizers 1 Statim. Solid surface pull-outs.	ATWR2	N.C.	
Tower 3 - Holds 2 Sterilizers 1 Statim. Solid surface pull-outs.	ATWR3	N.C.	
Tower 4 - Holds 2 Sterilizers. Solid surface pull-outs.	ATWR4	N.C.	

SELECT YOUR COLORS	Retail
Cabinet Laminate color	INCLUDED
Solid Surface countertops	INCLUDED
See color selection at page 28	

All pricing in USD.

ALLURE COLLECTION

AST14



ALLURE 14' STERILIZATION CENTER	Part Number	Retail	✓
With OPTIONAL Ultrasonic Drop Down 2 Doors Storage Cabinet (see pg. 27)	ASTDD14	N.C.	
Waste Module with Pullout Dual Bin 18"W x 36"H	-	INCLUDED	
Lower Storage Module 2 Drawers 1 Door 12"W x 36"H	-	INCLUDED	
Sink Module 26"W x 36"H	-	INCLUDED	
Receiving & Cleaning Upper 2 Doors Module 28"W x 30"H with Red Indicator	-	INCLUDED	
Upper 2 Doors Module w/Glove & Towel 26"W x 24"H	-	INCLUDED	
Receiving & Cleaning Upper 2 Doors Module 24"W x 30"H	-	INCLUDED	
Wrapping Station Module with 2 Doors 5 Drawers Storage 24"W	-	INCLUDED	
Sterilization Tower 25"W (ATWR1 - Please see below for more choices)	ATWR1	INCLUDED	
Sterile Clean Storage Module 3 Doors 10 Drawers 40"W with Blue Indicator	-	INCLUDED	
Tapmaster Hands Free Water Activation System	AMP1750	Add \$ 700.00	
	AST14	\$ 23,405.00	

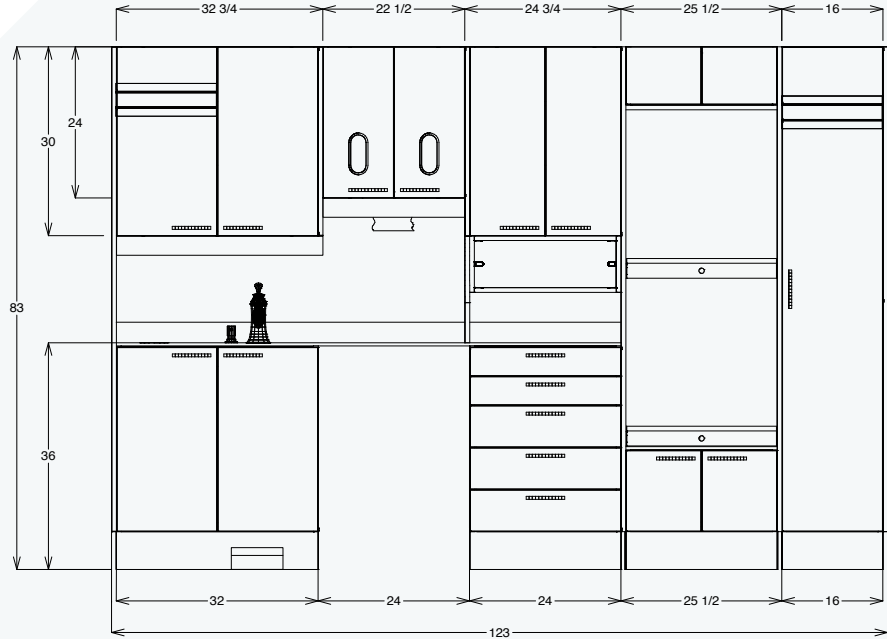
SELECT YOUR STERI TOWER <i>(see bottom pg26)</i>	Part Number	Retail	✓
Tower 1 - Holds 2 Small Washer Units. Solid surface pull-outs.	ATWR1	INCLUDED	
Tower 2 - Holds 2 Sterilizers 1 Statim. Solid surface pull-outs.	ATWR2	N.C.	
Tower 3 - Holds 2 Sterilizers 1 Statim. Solid surface pull-outs.	ATWR3	N.C.	
Tower 4 - Holds 2 Sterilizers. Solid surface pull-outs.	ATWR4	N.C.	

SELECT YOUR COLORS	Retail
Cabinet Laminate color	INCLUDED
Solid Surface countertops	INCLUDED
See color selection at page 28	

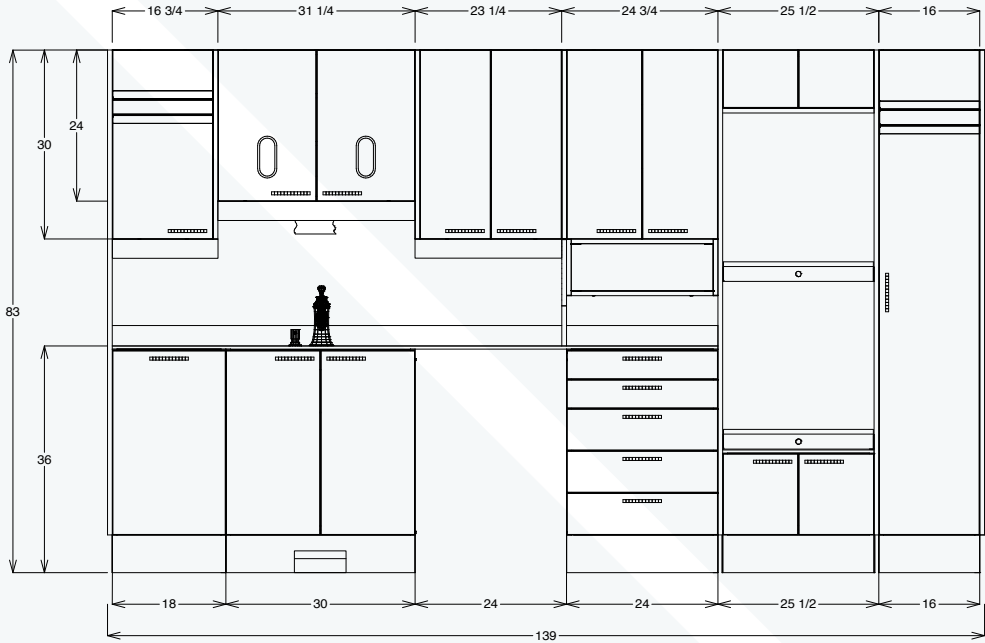
All pricing in USD.

ALLURE COLLECTION

Sterilization Centers Measurements



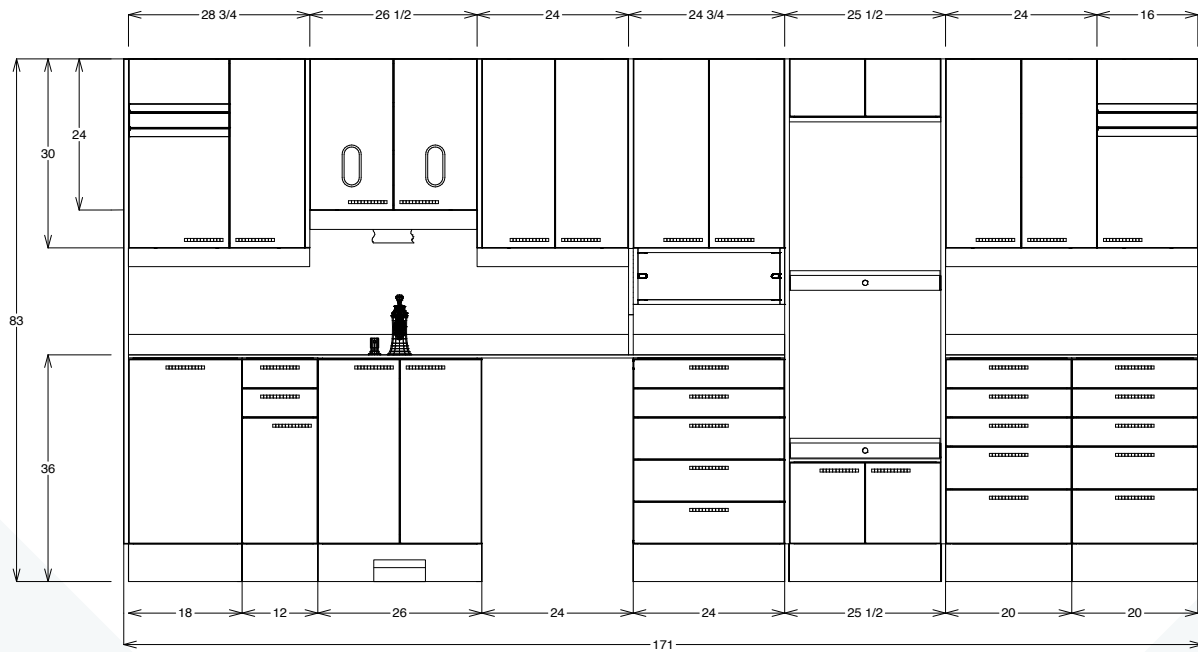
AST10



AST12

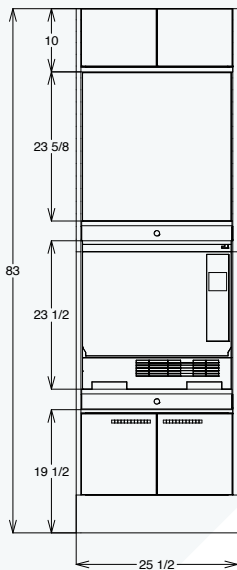
ALLURE COLLECTION

Sterilization Centers Measurements

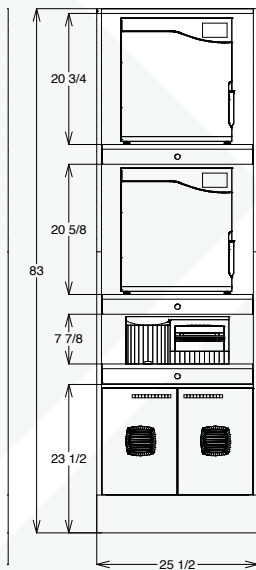


AST14

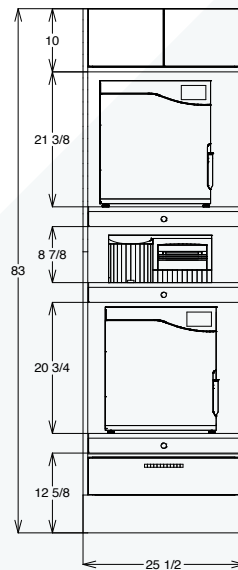
TOWER OPTIONS



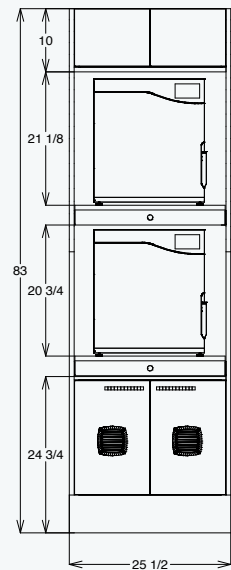
ATWR1



ATWR2



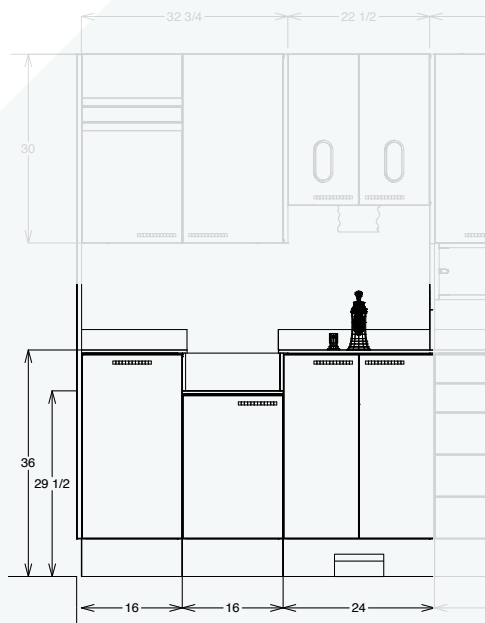
ATWR3



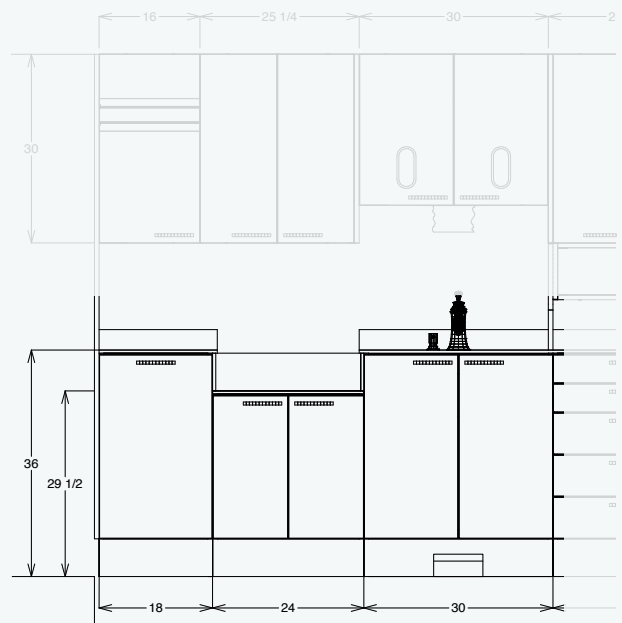
ATWR4

ALLURE COLLECTION

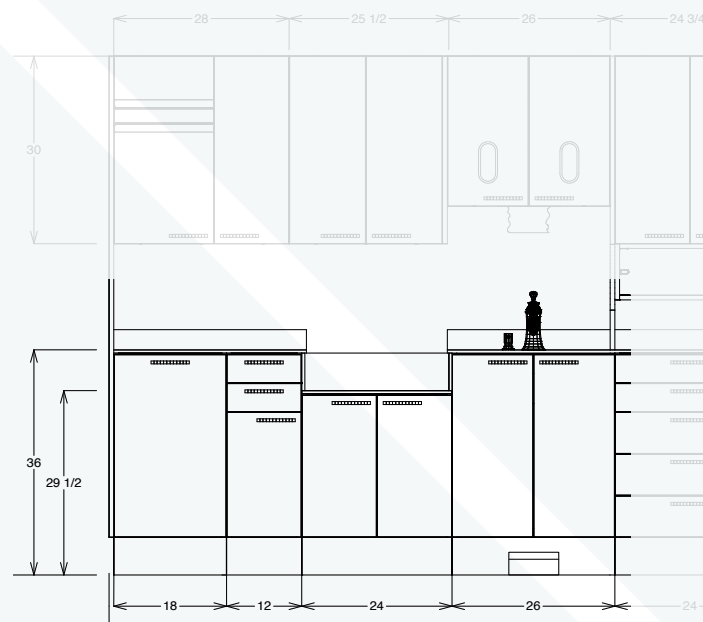
Sterilization Centers Measurements (w/Ultrasonic Drop Down Option)



ASTDD10



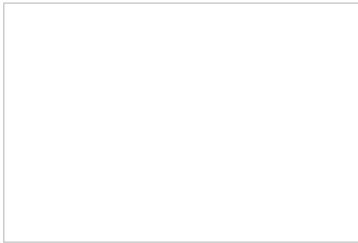
ASTDD12



ASTDD14

ALLURE COLLECTION COLORS SELECTION

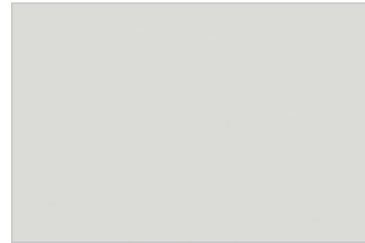
LAMINATE COLORS



WHITE • 949-58



GLOSSY WHITE • 5000B



FOLKSTONE • 927-58



BRUSHED ALUMINUM • L474



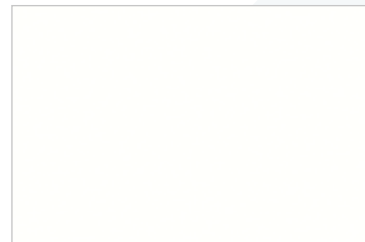
JAPANDI NATURAL • 2AR



CARLENTON AURA • L02

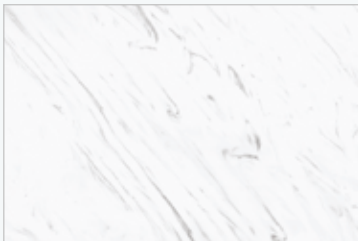


LATITUDE NORTH • L530



SNOW WHITE - 033A

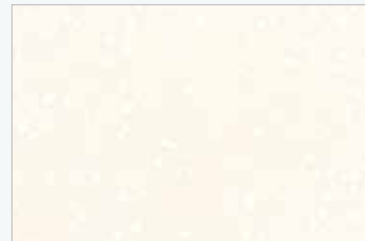
SOLID SURFACE COLORS



MT. CARRARA • M007



MODERN CONCRETE • M024



ANTARCTICA - DC103



STORM CLOUD • M032



MOROCCO MIST - 373AR



MOONSTONE GRANITE - 674A



The Cocciardi brothers and the late co-founder Giovanni Cocciardi.

HEAD OFFICE:

10721 Keele Street North, Maple, Ontario L6A 1S5
Customer Service **800.388.6236** • Fax **905.832.0732**
Website **www.mccdental.com** • Email **info@mccdental.com**

CABINET ORDERS

All orders must be placed through an authorized MCC dealer. Minimum retail order is \$60.00. Orders must be submitted with a sketch and floor plan. Orders received will be acknowledged within 72 hours. Please contact our Customer Service Department immediately if your order acknowledgment is not received within this time frame. Order acknowledgments and sketches must be signed by the dealer and returned to MCC within 5 business days. All orders are quoted in retail pricing except for freight, installation/delivery and special color charges, which are quoted at dealer cost. MCC reserves the right to change cabinet designs without notice.

PLACING AN ORDER (email to: orders@mccdental.com)

When placing a cabinet order, the following must appear on your purchase order:

- Model, Part, Sketch and/or Quote Number
- Date Required and/or Install Date
- Order Date
- Shipping Instructions
- Contact Person and Number
- Signature of Purchaser
- Purchase Order Number
- Cabinet, Countertop and Edging Color
- Accessories and/or Options
- Quantity

NON STANDARD COLORS

All non-standard color cabinet and countertop orders will incur an upcharge. Add 2-3 weeks to standard lead times for non-standard color cabinet and/or countertop orders.

CHANGES / MODIFICATIONS

Any major changes and/or modifications made to the original design and/or color of cabinet and/or countertop while in production will incur a 30% recovery fee. This fee recovers work in progress. Changes and/or modifications must be submitted to MCC in writing. Upon review and approval of the changes, the order's shipping and installation dates could shift depending on the degree of changes.

CANCELATIONS

Orders canceled within two weeks of the order date will incur a 40% cancellation fee. This fee recovers material cutting, production time and labor costs. Cancellations must be submitted to MCC in writing. Custom color orders may not be cancelled.

DELAYED / RESCHEDULED SHIP DATES

Orders which are requested to be rescheduled will be moved to the next available ship date. Orders which are requested to be rescheduled or have delayed shipping, post production, will incur local storage and handling fees until shipped.

ALLURE COLLECTION

TERMS AND CONDITIONS

TERMS

All prices, unless otherwise listed are FOB Maple, Ontario, Canada. Payment terms are specified on each invoice and are due in MCC's office by this date. Discount does not apply to freight, installation/delivery and/or special color charges. A service charge of 2% per month (annual 24%) will be charged on past due accounts. All prices are subject to change without notice.

RETURNED GOODS

An MCC factory Return Authorization Number (RAN) must be obtained from MCC for the return of any warranty or special sales situation. A Return Authorization form must be completed and faxed to our customer service department. If authorization is granted, transportation charges must be prepaid on ALL return items and received in good condition. The RAN must be clearly marked on the packing slip. An RAN does not guarantee credit. Credit will not be issued until after receipt and inspection of the returned items has been assessed. All returned items are subject to a 20% restocking fee and credit will be based on the original invoice price. MCC's Receiving Dock will not accept any returned freight that does not have a legitimate RAN. Please contact MCC for proper procedure information.

SHIPPING AND TRANSPORTATION

Arrangements for preferred carriers should be made in advance, in the absence of shipping instructions MCC reserves the right to determine the best mode of transportation based on the cabinet/equipment order.

FREIGHT DAMAGE

Merchandise arriving with visible external damage should be thoroughly inspected and clearly described on the bill of lading, by the customer, and the carrier should be notified IMMEDIATELY. If concealed freight damage is revealed upon unpacking of cabinets, the carrier and MCC should be notified IMMEDIATELY. Digital photographs of all damages should be emailed within 10 days of receipt of the shipment. The carrier is responsible for damage or loss in transit. If damage is not noted on the bill of lading, the buyer must accept full responsibility for any damage discovered at a later date.

WATER DAMAGE

Proper care and maintenance must be adhered to in order to prevent water damage. This means thoroughly wiping excess water, solvents and liquids from countertops. MCC is not responsible for any water damage. At MCC Dental we stand behind our products with a Six (6) Year casework warranty. We want every MCC Dental customer to be satisfied and covered for a long time because, with more than 50 years in the business, we believe that our cabinets are built to last, with a craftsmanship and passion that distinguish us from our competitors. Our philosophy is always to design and deliver the absolute best and most durable Allure cabinets for your dental office.

LIMITED WARRANTY

In effect as of June 1, 2021

INTRODUCTION

At MCC Dental, we stand behind our products with the 6-year casework limited warranty set out below. We want every MCC Dental customer to be satisfied and covered for a long time because we believe that our cabinets are built to last, with a craftsmanship and passion that distinguish us from our competitors. Our philosophy is always to design and deliver the absolute best and durable Allure cabinets for your dental office.

SCOPE OF WARRANTY

MCC Dental warrants that any products manufactured by MCC Dental (except for "Exclusions" below) with defective workmanship under normal interior intended use and service of products will be repaired or replaced. This limited warranty is restricted to defects that are reported to MCC Dental within the applicable warranty period and which prove to be defective upon examination by MCC Dental. This limited warranty is only available to the original retail purchaser of warranted product.

WARRANTY PERIOD

The applicable warranty period for any particular product, which begins from the date of delivery to the first retail user, is as follows:

- a. 6 years for MCC Dental brand (Allure) casework cabinetry which includes electrical components and door and drawer fronts, but does not include the items listed in b. below or any "Exclusions" listed on next page
- b. Standard manufacturers' warranty policy applies to any delivery system installed in MCC cabinets. See manufacturers' warranty for details.

EXCLUSIONS

MCC Dental's warranty does not include coverage plumbing accessories, sinks, and faucets. Warranties for these excluded items are provided by the manufacturer to the first purchaser, and any information on the warranties of these manufacturers will be available with the applicable products.

This limited warranty also does not cover:

- a. Any damage, in whole or in part, caused by misuse, negligence, abuse, change of business location, accident, freight damage, alteration, tampering or the failure to obtain repair or replacement during the warranty period
- b. Water damage
- c. Color changes caused by artificial or natural light
- d. Products not properly installed, cleaned, used and maintained as instructed in the MCC Dental "installation" and/or "installation/operation" manual for the product
- f. Components or products not manufactured by MCC Dental
- g. Components or products not purchased from MCC Dental or an authorized MCC Dental dealer
- h. Components or products that have been used directly or indirectly with unauthorized third-party products or parts
- i. Expenses and costs of maintenance, adjustment, repair or cleaning not expressly authorized by MCC Dental
- j. Representations or warranties made by anyone other than MCC Dental

MCC Dental is not responsible for costs and expenses relating to removal, installation, repainting, refinishing or any other costs beyond the replacement or repair of the warranted item.

MCC Dental does not warrant that a repaired or replaced item will have the exact same color, grain, texture or finish as the original item.

OBTAINING WARRANTY SERVICE

Warranty service must be obtained by MCC Dental or any MCC Dental authorized dealer where warranty service is requested. For more information on warranty service or issues, MCC Dental can be contacted by phone at 1-800-388-6236 or by email at: customerservice@mccdental.com.

EXCLUSIVE REMEDY; LIMITED LIABILITY

The sole obligation of MCC Dental under this limited warranty is the replacement or repair of defective components or products to which this limited warranty applies.

The maximum liability of MCC Dental, together with its employees, contractors, suppliers, directors, officers, agents, resellers and dealers, to you is limited to the original purchase price you paid for the warranted product.

MCC Dental is not liable for and hereby disclaims any direct, indirect, incidental, consequential or exemplary damages or delays, including but not limited to, damages for loss of income, profit, downtime, employee or independent contractor payments, wages, benefits.

OTHER

No claim or action may be brought against MCC Dental for breach of this limited warranty, an implied warranty, if any, or for any other claim arising out of or relating to the products, more than ninety (90) days following expiration of the limited warranty period to which the claim or action relates.

This limited warranty and any disputes arising out of or in connection with MCC Dental products shall be governed by the laws of the Province of Ontario and the laws of Canada applicable therein, and shall be in the exclusive jurisdiction of the courts located in the Province of Ontario.

If any provision of this limited warranty is invalid or unenforceable, the meaning of such provision will be construed, to the extent feasible, so as to render the provision valid and enforceable, and if no feasible interpretation would save such provision, it will be severed from the remainder of this limited warranty, which will remain in full force and effect.

MCC Dental reserves the right to modify or withdraw this limited warranty at any time without notice. Any such modification or withdrawal will not affect products installed and fully paid for prior to the date of such modification or withdrawal.



03.07.24.P500

TAILORED SOLUTIONS FOR YOUR DENTAL PRACTICE

*Custom Cabinets • Sterilization Centers • Rear Cabinets • Side Cabinets
Center Island Units • Mobiles • Orthodontic Mobiles • Lab Cabinets • Pediatric Benches*

1-800-388-6236 | www.mccdental.com

